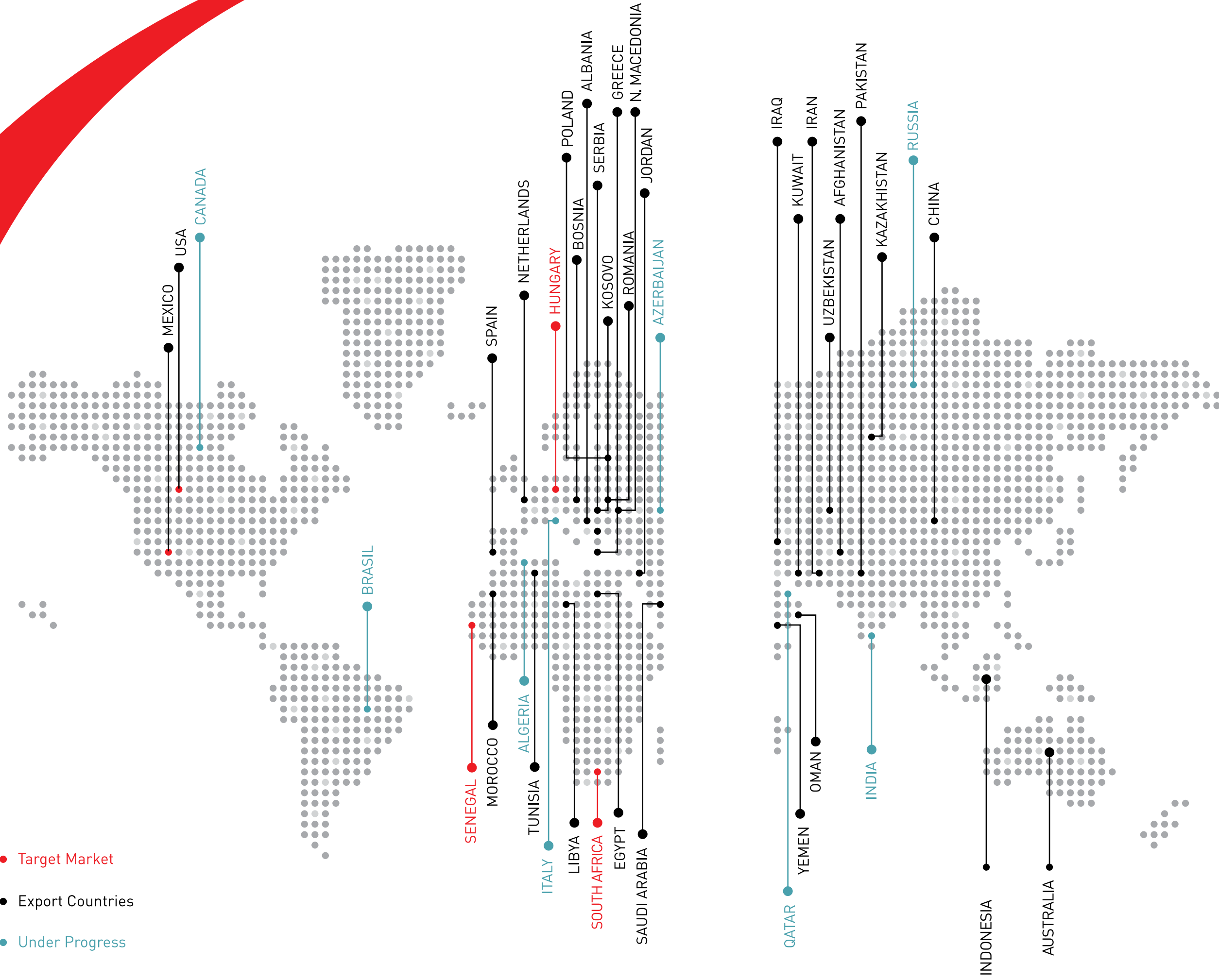




Catalog For Professional  
Growers

Manier

- Target Market
- Export Countries
- Under Progress



MANIER





## About Manier

MANIER Seeds is an independent vegetable seed breeder and producer company authorized by the Turkish Agricultural Ministry. Our seed production meets the international seeds quality standards and the quality requirements.

Our parent company Mancak Ziraat dates back to 1978 where it was the first seed production company in field crops. Our vegetable seed breeding and production activities have been carried out under Manier Tohumculuk name since 2003.

Our team of vegetable seed experts work on breeding and production of species particularly belonging to Cucurbitaceae and Solanaceae family. By using both the classical breeding techniques and the supportive modern techniques in the field of research and development, they develop varieties with disease resistance, high yield, good quality and long shelf life and Non-GMO. Vegetable seed varieties of Manier has a wide sales network in Türkiye as well as in international markets covering Europe, Balkans, North Africa, Middle East, USA and Asia-Pacific.

Our aim; together with our highly specialized and dedicated team, is always to offer our growers beyond their expectations.

YOUR EXPECTATIONS ARE OUR AIM.



## Our Breeding Activities

We have been carrying out plant breeding activities for many years in order to increase the quality, productivity and resistance to problems caused by biotic and abiotic factors according to our consumers and customers demands.

Our breeding programs are concentrated in 7 species (Tomato, Pepper, Eggplant, Melon, Watermelon, Cucumber and Squash) that are related to Solanaceae and Cucurbitaceae families. We work on breeding for domestic and international markets such as Europe, America, the Middle East, North Africa and Asia Pacific.

In addition to traditional breeding techniques, we use Molecular Biological methods such as tissue culture, MAS (molecular marker assist selection), Genomic and Bioinformatics in order to support them and accelerate the breeding process.

We work closely with various Universities and Research Institutes in order to follow technological developments more closely and to carry out more effective research and development activities.

Generally, in our breeding studies aimed to develop varieties resistant to disease factors such as viruses, viroids, fungi and bacteria as well as fruit quality criteria such as flavor, color and shelf life. In addition, developing genotypes that are tolerant to abiotic conditions, such as resistance to low and high temperatures, are part of our activities.

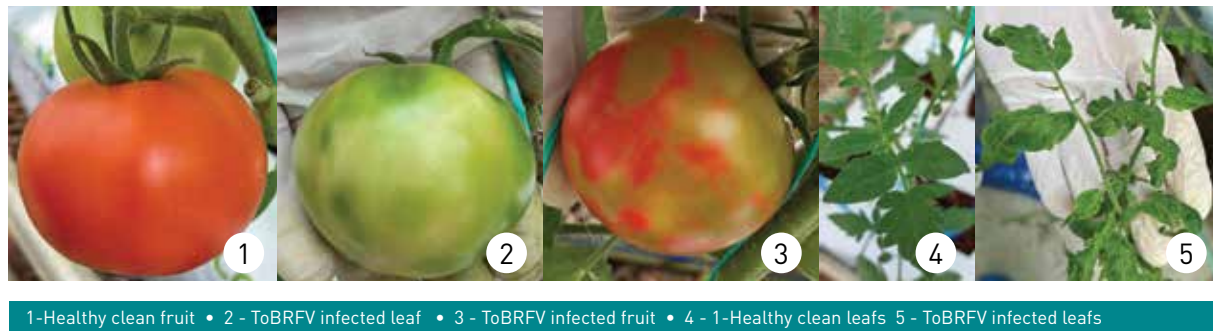


## Tomato Brown Rugose Fruit Virus (ToBRFV)

ToBRFV, which is an important disease agent especially in tomatoes and peppers, was first seen in Israel in 2014 and started to spread. It was reported in Jordan in 2016 and was later reported in the, Germany, Italy, France, Palestine, China and the UK. It now poses a serious problem in all areas where tomato production is carried out in the world. In Türkiye, its presence was determined in leaf and fruit samples of tomato plants in 2019.

The virus, which can be transported very easily mechanically, can easily spread through contaminated seeds, fruit, leaves, plant residues, bumblebees and weeds. It has been determined that it persists for a long time without losing its contagiousness, even on soil and other surfaces.

Symptoms in tomatoes vary depending on the variety, but occur on the leaves as chlorosis, mosaic (mild or severe), mottling and narrowing of the leaf blade; Necrotic spots can be seen on stems, petioles and sepals. Symptoms on the fruits are seen as deformities, yellow or brown spots and wrinkling, and they become unmarketable.



While the leaves of the pepper plant show symptoms in the form of deformities, yellowing and mosaics, it also causes deformities, yellow or brown areas or green lines in the fruits.

Disease-free seeds, growing environment and keeping resistant varieties play an important role in the fight against the disease.

## Our Research Studies About ToBRFV

In Jordan, where the disease spread, trials were conducted with many of our tomato varieties in 2017. In these trials, it was determined that some of our hybrids did not show signs of disease. Based on this, in our studies, the response of many wild and cultivated tomatoes to the disease was examined using known inoculation techniques under controlled conditions. As a result, 4 different highly resistant sources have been identified to date. The molecular markers we developed for some of these resistances are used in our breeding studies. Our efforts to find new resistance sources and develop molecular markers continue.

The Kuantum F1 variety, which our manufacturers have preferred since 2021, was developed within the scope of these studies. Although competing varieties suffered serious losses in areas infected with ToBRFV, no symptoms were observed in the fruits of our KUANTUM F1 variety in the same areas and our producers were not harmed.

In addition, our new varieties such as KANAKAN F1, HEDEF PLUS F1 and DİRİLİŞ F1 stand out with their disease resistance. We also have resistant varieties of indeterminate, determinate, beef, cluster, roma, cocktail and pink tomato types.



## KUANTUM F1



## Contents

Manier in the World	1
Manier in the World	2
About us	3
Our Breeding Activities	4
Tomato Brown Rugose Fruit Virus	5
Our Research Studies About ToBRFV	6
Contents	7
Contents	8
Tomato	9
Kuantum - Hedef Plus	10
Kanakan - Turkuaz Plus	11
Tiryaki - Cazibe	12
Narisu - Turkuaz	13
Hedef - Nusret	14
Şahmat - Diriliş	15
Dilimkaya - Dilimhan	16
Kunuri - Dilim	17
Şilem - Karanfil	18
MRT 107 - Rozafa	19
MRT 8158 - İmza	20
Sencron - Seriale	21
Mtro - Jeremy	22
Kapadokya - MRT 1141	23
Sembol - Örgü	24
Orchestra - Osage	25
Original - MRT 1458	26
Togan - Nergis	27
Fatih - Gözde	28
Sando 128 - Sando 8151	29
Pepper	30
Nefer - Nefes	31
Kapto - MRP 8006	32
Koperta - MRP 8009	33
Nilüfer - Dercan	34
Derman - Hakim	35

## Contents

Simay - Selin	36
MRP 9011 - Gent	37
Tenis - Seher	38
Calinus - Crisby	39
Seyir 63 - Sonaro	40
Puma - Hisar	41
Eggplant	42
Simya - MRE 2093	43
MRE 1031 - MRE 1108	44
MRE 2008 - MRE 1009	45
Cucumber	46
MRC 07 - MRC 05	47
Kuatro - Copernic	48
Seri - Agnes	49
Besta - Camlıca	50
Dolunay - Kervan	51
Atom - MRC 9003	52
Yılkı - MRC 6052	53
Alpagu - Kargu	54
MRC 1032 - Tulga	55
MRC 1082 - MRC 1023	56
Squash	57
Seyden - Torpido	58
Target - İnci	59
Kunuri - MRS 1005	60
Ayda - MRS 8029	61
Melon	62
Kafka - Şıra	63
Süren - Stanza	64
Serin - Gizem	65
MRM 526 - MRM 601	66
Watermelon	67
Estar 1056 - Atakan	68
Orka - MRW 1034	69
Manier in the Türkiye	70

# Tomato

MANIER



## KUANTUM

- Indeterminate type and high yield variety.
- It is suitable for indoor, outdoor and high-tech greenhouse cultivation.
- Variety has medium internode and strong plant structure.
- Fruits are oblate, red and firm.
- Fruits are tolerant to ToBRFV virus.
- Long shelf life and suitable for green harvest.
- Good for export and domestic market.

Variety Name	Fruit Weight	Fruit Shape	Fruit Colour	Shelf Life	Disease Resistance
KUANTUM	240 - 280 gr	Oblate	Red	LSL	HR: Fol; 0,1, Va, Vd, ToMV, Tswv, IR: Tylcv, Tswv, N (Ma, Mi, Mj), ToBRFV

## HEDEF PLUS

- Indeterminate type and high yield variety.
- It is suitable for autumn spring and single season cultivation.
- Short internode and strong plant structure.
- Fruits are round, red colour and has long shelf life.
- Fruits are tolerant to ToBRFV virus.
- Good for export and domestic market.



Variety Name	Fruit Weight	Fruit Shape	Fruit Colour	Shelf Life	Disease Resistance
HEDEF PLUS	250 - 280 gr	Round	Red	LSL	HR: Fol; 0,1, Va, Vd, ToMV IR: Tylcv, Tswv, N (Ma, Mi, Mj), For, ToBRFV





# KANAKAN

- Indeterminate type tomato variety.
- Suitable for spring and autumn season productions.
- Variety has short internodes and strong plant structure.
- It has a uniform fruit structure and high yield variety.
- Fruits are dark red and very firm.
- Fruits and plants are tolerant to ToBRFV virus.
- It has a long shelf life.

Variety Name	Fruit Weight	Fruit Shape	Fruit Colour	Shelf Life	Disease Resistance
KANAKAN	220 - 280 gr	Oblate	Red	LSL	HR: Fol; 0,1, Va, Vd, ToMV, Tswv IR: Tylcv, For, N(Ma, Mi, Mj), ToBRFV

# TURKUAZ PLUS

- Indeterminate loose type tomato variety.
- Suitable for spring and autumn season productions.
- Variety has short internodes and strong plant structure.
- It has a uniform fruit structure and high yield variety.
- Fruits are dark red and very firm.
- Fruits are tolerant to ToBRFV virus.
- It has a long shelf life.



Variety Name	Fruit Weight	Fruit Shape	Fruit Colour	Shelf Life	Disease Resistance
TURKUAZ PLUS	240 - 280 gr	Oblate	Red	LSL	HR: Fol; 0,1, Va, Vd, Tswv, ToMV IR: Tylcv, N (Ma, Mi, Mj), ToBRFV



# TIRYAKI

- Indeterminate loose type tomato variety.
- Suitable for spring and autumn season productions.
- Variety has short internodes and strong plant structure.
- It has a uniform fruit structure and high yield variety.
- Fruits are dark red and very firm.
- Fruits are tolerant to ToBRFV virus.
- It has a long shelf life.

Variety Name	Fruit Weight	Fruit Shape	Fruit Colour	Shelf Life	Disease Resistance
TIRYAKI	240 - 280 gr	Oblate	Red	LSL	HR: Fol; 0,1 Va, Vd, Tswv, ToMV IR: Tylcv, N (ma, mi, mj), ToBRFV

# CAZİBE

- Indeterminate variety is very early and has high yield.
- It is suitable for autumn, spring and single season.
- Short internode and strong plant structure.
- Fruits are round, red colour and has long shelf life.
- Good for export and domestic market.



Variety Name	Fruit Weight	Fruit Shape	Fruit Colour	Shelf Life	Disease Resistance
CAZİBE	240 - 260 gr	Round	Red	LSL	HR: Fol; 0,1 Va, Vd, ToMV IR: Tylcv, Tswv, N (Ma, Mi, Mj)





# NARİSU

- Indeterminate type and high yield variety.
- It is suitable for autumn spring and single season cultivation.
- Short internode and strong plant structure.
- Fruits are round, red colour and has long shelf life.
- Fruits are tolerant to ToBRFV virus.
- Good for export and domestic market.

Variety Name	Fruit Weight	Fruit Shape	Fruit Colour	Shelf Life	Disease Resistance
<b>NARİSU</b>	250 - 280 gr	Yuvarlak	Red	LSL	HR: Fol; 0,1, Va, Vd, ToMV IR: Tylcv,Tswv,N(Ma, Mi, Mj), For,ToBRFV

# TURKUAZ

- Indeterminate variety has early maturity and high yield.
- Suitable for early autumn, autumn and spring seasons cultivation.
- Plant has short internode, ordered cluster structure and has a high fruit setting ability.
- Fruits are round and red, has long shelf life.
- Good for export and domestic market.



Variety Name	Fruit Weight	Fruit Shape	Fruit Colour	Shelf Life	Disease Resistance
<b>TURKUAZ</b>	240 - 280 gr	Oblate	Red	LSL	HR: Fol; 0,1, Va, Vd, Tswv, ToMV IR: Tylcv, N (Ma, Mi, Mj), ToBRFV



# HEDEF

- Indeterminate variety with high yield potential.
- It is suitable for autumn, spring and seasonal cultivation.
- Variety has medium internode and strong plant structure
- Fruits are oblate, bright red and long shelf life.
- Suitable for export and domestic market.

Variety Name	Fruit Weight	Fruit Shape	Fruit Colour	Shelf Life	Disease Resistance
<b>HEDEF</b>	220 - 240 gr	Oblate	Bright Red	LSL	HR: Fol; 0,1, Va, Vd, ToMV IR: Tylcv, N (Ma, Mi, Mj)

# NUSRET

- Variety is indeterminate and extremely productive.
- Suitable for spring indoor and open field cultivation.
- Variety has short internode. Fruits are round and red.
- It has long shelf life and extremely firm.
- It is suitable for export and domestic market.
- Good for green harvesting.



Variety Name	Fruit Weight	Fruit Shape	Fruit Colour	Shelf Life	Disease Resistance
<b>NUSRET</b>	250 - 300 gr	Round	Red	LSL	HR: Fol; 0,1, Va, Vd, ToMV IR: Tylcv, N (Ma, Mi, Mj), For





# ŞAHMAT

- Indeterminate variety have very early maturity and high yield.
- Suitable for indoor, spring and open field cultivation.
- Fruits are oblate and deep red.
- Short internode with Good fruit setting and long shelf life.
- Good for domestic market.

Variety Name	Fruit Weight	Fruit Shape	Fruit Colour	Shelf Life	Disease Resistance
ŞAHMAT	220 - 240 gr	Oblate	Deep Red	LSL	HR: Fol; 0,1, Va, Vd, ToMV IR: N (Ma, Mi, Mj)

# DİRİLİŞ



- Indeterminate type tomato, mid early maturity and high yield variety.
- Suitable for indoor, autumn and spring seasons production.
- Variety has short internode; fruits are round and red.
- Fruits are firm and has long shelf life.
- Fruits and plants are tolerant to ToBRFV virus.
- Good for export and domestic market.



Variety Name	Fruit Weight	Fruit Shape	Fruit Colour	Shelf Life	Disease Resistance
DİRİLİŞ	240 - 260 gr	Round	Red	LSL	HR: Fol; 0,1, Va, Vd, ToMV IR: Tylcv, Tswv, N (Ma, Mi, Mj), ToBRFV



# DİLİMKAYA

- Indeterminate marmande type tomato with green shoulder.
- Suitable for open field, greenhouse, spring and high plateau cultivation.
- Mid-early variety and short internode.
- Fruits are flattened, red and has long shelf life.
- Suitable for green harvesting, high yield variety.

Variety Name	Fruit Weight	Fruit Shape	Fruit Colour	Shelf Life	Disease Resistance
DİLİMKAYA	250 - 300 gr	Flattened	Red	LSL	HR: Fol; 0,1, Va, Vd, ToMV IR: Tylcv, For

# DİLİMHAN

- Semi-determinate marmande type tomato.
- Suitable for open field, greenhouse, autumn and spring production.
- Mid-early variety and It has short internode.
- Fruits are flattened, red and has long shelf life.
- Suitable for green harvesting, high yield variety.



Variety Name	Fruit Weight	Fruit Shape	Fruit Colour	Shelf Life	Disease Resistance
DİLİMHAN	250 - 300 gr	Flattened	Red	LSL	HR: Fol; 0,1, Va, Vd, ToMV IR: Tylcv



# KUNURİ

- Indeterminate brown marmande type tomato.
- Good for indoor, autumn, spring and high plateau production.
- Variety has mid-early maturity and tasty fruit with long shelf life.
- Fruits are flattened and brown.
- Good fruit setting.
- Suitable for green harvesting, high yield variety.

Variety Name	Fruit Weight	Fruit Shape	Fruit Colour	Shelf Life	Disease Resistance
KUNURİ	250 - 300 gr	Flattened	Brownish Red	LSL	HR: Fol; 0,1, Va, Vd, ToMV IR: Tylcv, For

# DİLİM

- Indeterminate marmande type tomato with strong ribbing and green shoulder.
- Suitable for autumn, spring and single season production.
- Mid-early variety and mid internode.
- Fruits are tasty, oblate and red color with long shelf life.
- Suitable for green harvesting, high yield variety.



Variety Name	Fruit Weight	Fruit Shape	Fruit Colour	Shelf Life	Disease Resistance
DİLİM	250 - 300 gr	Flattened	Red	LSL	HR: Fol; 0,1, Va, Vd, ToMV IR: Tylcv, For



# ŞİLEM

- Indeterminate marmande pink type tomato variety.
- Suitable for spring and autumn season productions.
- Variety has short internodes and strong plant structure.
- It has a uniform fruit structure and high yield variety.
- Fruits are ribbled and firm.
- It has a long shelf life.

Variety Name	Fruit Weight	Fruit Shape	Fruit Colour	Shelf Life	Disease Resistance
ŞİLEM	240 - 300 gr	Flattened	Pink	LSL	HR: Fol; 0,1, Va, Vd, ToMV,Tswv IR: Tylcv

# KARANFİL

- Indeterminate pink type tomato.
- Suitable for indoor, open field, autumn and spring production.
- Mid-early variety, short internode.
- Fruits are round, pink and firm.
- Very long shelf life, high yield variety.



Variety Name	Fruit Weight	Fruit Shape	Fruit Colour	Shelf Life	Disease Resistance
KARANFİL	250 - 300 gr	Round	Pink	LSL	HR: Fol; 0,1, Va, Vd, ToMV IR: Tylcv, Tswv, N (Ma, Mi, Mj)





# MRT 107

- Indeterminate pink marmande type tomato variety.
- Suitable for spring, autumn and single season production.
- Variety has short internodes and strong plant structure.
- It has a uniform fruit structure and high yield variety.
- Fruits are ribbled and firm.
- It has a long shelf life.

Variety Name	Fruit Weight	Fruit Shape	Fruit Colour	Shelf Life	Disease Resistance
MRT 107	240 - 300 gr	Flattened	Pink	LSL	HR: Fol; 0,1, Va, Vd,ToMV,Tswv IR: Tylcv,

# ROZAFA

- Indeterminate pink type tomato variety.
- Suitable for spring, autumn and single season production.
- Variety has short internodes and strong plant structure.
- It has a uniform fruit structure and high yield variety.
- Fruits are ribbled and firm.
- It has a long shelf life.



Variety Name	Fruit Weight	Fruit Shape	Fruit Colour	Shelf Life	Disease Resistance
ROZAFA	240 - 300 gr	Oblate	Pink	LSL	HR: Fol; 0,1, Va, Vd, ToMV,Tswv IR: Tylcv ,N(Ma, Mi, Mj)



# MRT 8158

- Semi determinate type tomato variety.
- Suitable for spring and autumn season productions.
- The plant structure is strong.
- Fruits are pink and firm.
- High yield variety.
- Long shelf life.

Variety Name	Fruit Weight	Fruit Shape	Fruit Colour	Shelf Life	Disease Resistance
MRT 8158	220 - 280 gr	Oblate	Pink	LSL	HR:Fol; 0,1, Va, Vd, ToMV IR: For

# İMZA

- Indeterminate cluster type tomato.
- Good for high-tech glasshouse, indoor, autumn, spring and single seasons cultivation.
- Fruits are round and red.
- The cluster structure is good and has 6-7 fruits per cluster.
- High yield variety and long shelf life.



Variety Name	Fruit Weight	Fruit Shape	Fruit Colour	Shelf Life	Disease Resistance
İMZA	130 140 gr	Round	Red	LSL	HR: Fol; 0,1, Va, Vd, ToMV IR: Tylcv, Tswv, N (Ma, Mi, Mj),For





# SENCRON

- Indeterminate cluster type tomato.
- Good for high-tech glasshouse, indoor, autumn, spring and single season cultivation.
- Fruits are round and red.
- Each cluster has uniform 6-8 fruits
- High yield variety and long shelf life.

Variety Name	Fruit Weight	Fruit Shape	Fruit Colour	Shelf Life	Disease Resistance
SENCRON	130 - 140 gr	Round	Red	LSL	HR: Fol; 0,1, Va, Vd, ToMV IR: Tylcv, N (Ma, Mi, Mj), For

# SERIALE

- Cluster type tomato variety suitable for soilless greenhouses.
- Suitable for winter and summer production.
- The plant structure is strong.
- Medium early harvest period.
- Fruits are round, red and firm with a thick calyx
- It has a high tonnage and fast growing plant structure.
- Long shelf life.



Variety Name	Fruit Weight	Fruit Shape	Fruit Colour	Shelf Life	Disease Resistance
SERIALE	140 - 150 gr	Round Oblate	Red	LSL	HR: Fol; 0,1, Va, Vd, ToMV IR: Tylcv,For, N (Ma, Mi, Mj), ToBRFV



# MTRO

- Saladette type with high yield potential.
- Suitable for indoor, open field, autumn, spring, and single-season cultivation.
- Mid-early variety, short internode.
- Fruits are ovate, red, and uniform, and has a long shelf life.

Variety Name	Fruit Weight	Fruit Shape	Fruit Colour	Shelf Life	Disease Resistance
MTRO	120 - 140 gr	Ovate	Red	LSL	HR: Fol; 0,1, Va, Vd, ToMV IR: Tylcv, N (Ma, Mi, Mj)

# JEREMY

- Saladette type with high yield potential.
- Suitable for indoor, open field, autumn, spring, and single-season cultivation.
- Mid-early variety,short internode.
- Fruits are ovate, red, and uniform, and has a long shelf life.



Variety Name	Fruit Weight	Fruit Shape	Fruit Colour	Shelf Life	Disease Resistance
JEREMY	140 - 180 gr	Ovate	Red	LSL	HR: Fol; 0,1, Va, Vd, ToMV IR: Tylcv, N (Ma, Mi, Mj)





# KAPADOKYA

- Saladette type with high yield potential.
- Suitable for indoor, open field, autumn, spring, and single-season cultivation.
- Mid-early variety, short internode.
- Fruits are ovate, red, and uniform and have a long shelf life.

Variety Name	Fruit Weight	Fruit Shape	Fruit Colour	Shelf Life	Disease Resistance
<b>KAPADOKYA</b>	120 - 150 gr	Ovate	Red	LSL	HR: Fol; 0,1, Va, Vd, ToMV, Tswv IR: Tylcv ,N(Ma, Mi, Mj)

# MRT 1141

- Red cluster saladette type tomato variety.
- Suitable for spring and autumn season productions.
- The plant structure is strong.
- Fruits are oval, red and firm.
- High yield variety.
- Long shelf life.



Variety Name	Fruit Weight	Fruit Shape	Fruit Colour	Shelf Life	Disease Resistance
<b>MRT 1141</b>	100 - 120 gr	Ovate	Red	LSL	HR: F 1-2, V, ToMV, Tswv IR: Tylcv,For



# SEMBOL

- It is indeterminate oval cocktail tomato.
- Good for indoor, autumn and spring production.
- After third cluster plant has ability to divide clusters.
- Fruits are oval and bright red.
- Good fruit setting and long shelf life. Extremely high yield variety.
- Well performance in winter and fruits are delicious.

Variety Name	Fruit Weight	Fruit Shape	Fruit Colour	Shelf Life	Disease Resistance
<b>SEMBOL</b>	25 - 30 gr	Oval	Bright Red	LSL	HR: Fol; 0,1, Va, Vd, ToMV, Tswv IR: Tylcv, Tswv, N (Ma, Mi, Mj)

# ÖRGÜ

- It is indeterminate round oval cocktail type.
- Good for indoor, autumn and spring production.
- Mid-early. Good fruit setting and long shelf life.
- After third cluster plant has ability to divide clusters.
- Extremely high yield variety.
- Well performance in winter and fruits are delicious.



Variety Name	Fruit Weight	Fruit Shape	Fruit Colour	Shelf Life	Disease Resistance
<b>ÖRGÜ</b>	20 - 25 gr	Round Oval	Bright Red	LSL	HR: Fol; 0,1, Va, Vd, ToMV IR: Tylcv, N (Ma, Mi, Mj)





# ORCHESTRO

- It is indeterminate round oval cocktail type.
- Good for indoor, autumn and spring production.
- Mid-early. Good fruit setting and long shelf life.
- After third cluster plant has ability to divide clusters.
- Extremely high yield variety.
- Well performance in winter and fruits are delicious.

Variety Name	Fruit Weight	Fruit Shape	Fruit Colour	Shelf Life	Disease Resistance
ORCHESTRO	20 - 25 gr	Round Oval	Bright Red	LSL	HR: Fol; 0,1, Va, Vd, ToMV IR: Tylcv ,N(Ma, Mi, Mj)

# OSAGE

- It is indeterminate round oval cocktail type.
- Good for indoor, autumn and spring production.
- Mid-early. Good fruit setting and long shelf life.
- After third cluster plant has ability to divide clusters.
- Extremely high yield variety.
- Well performance in winter and fruits are delicious.



Variety Name	Fruit Weight	Fruit Shape	Fruit Colour	Shelf Life	Disease Resistance
OSAGE	20 - 25 gr	Round	Red	LSL	HR: Fol; 0,1, Va, Vd, ToMV IR: Tylcv ,N(Ma, Mi, Mj), For



# ORIGINAL

- Cherry type tomato variety.
- Suitable for loose and cluster harvesting.
- Suitable for spring, autumn and single season production.
- The plant structure is strong.
- Fruits are round, firm and red.
- High yield variety.
- Long shelf life.
- Does not cause cracking.

Variety Name	Fruit Weight	Fruit Shape	Fruit Colour	Shelf Life	Disease Resistance
ORIGINAL	15 - 20 gr	Round	Bright Red	LSL	HR: Fol; 0,1, Va, Vd, ToMV IR: Tylcv ,N(Ma, Mi, Mj)

# MRT 1458

- Cocktail type tomato variety.
- Suitable for spring and autumn season productions.
- The plant structure is strong.
- Fruits are round, firm and red.
- Fruit has 14-18 fruits in the cluster.
- High yield variety.
- Long shelf life.



Variety Name	Fruit Weight	Fruit Shape	Fruit Colour	Shelf Life	Disease Resistance
MRT 1458	20 - 25 gr	Round	Red	LSL	HR: Fol:0,1 Va,Vd ToMV IR:Tylcv,N (Ma, Mi, Mj),For





# TOGAN

- Determinate type.
- Extremely productive and very firm variety.
- Suitable for all open field production seasons.
- Mid-early and very compact plant against sunburn.
- Fruits are round oblate, dark red and extremely firm.
- Long shelf life and strong fruit setting.
- High adaptation ability to different climates.

Variety Name	Fruit Weight	Fruit Shape	Fruit Colour	Shelf Life	Disease Resistance
<b>TOGAN</b>	240 - 280 gr	Round Oblate	Dark Red	LSL	HR: Fol; 0,1, Va, Vd, ToMV, Tswv IR: Tylcv, N (Ma, Mi, Mj)

# NERGİS

- Determinate type, extremely high yield variety with tasty fruits.
- Mid-Early and very compact plant against sunburn.
- Fruits are round oblate, bright red and firm.
- Long shelf life and strong fruit setting.
- High adaptation ability to different climates.



Variety Name	Fruit Weight	Fruit Shape	Fruit Colour	Shelf Life	Disease Resistance
<b>NERGİS</b>	240 - 280 gr	Oblate	Bright Red	LSL	HR: Fol; 0,1, Va, Vd, ToMV IR: Tswv, ToBRFV



# FATİH

- Determinate type and high yield variety.
- Early and compact plant against sunburn.
- Fruits are oblate and bright red.
- Fruits are uniform and long shelf life.

Variety Name	Fruit Weight	Fruit Shape	Fruit Colour	Shelf Life	Disease Resistance
<b>FATİH</b>	200 - 240 gr	Oblate	Bright Red	LSL	HR: Fol; 0,1, Va, Vd, ToMV IR: Tylcv, Tswv

# GÖZDE

- Determinate type and very productive variety.
- Mid-early and compact plant against sunburn.
- Fruits are oblate and red.
- The variety has vigorous plant structure and has long shelf life.



Variety Name	Fruit Weight	Fruit Shape	Fruit Colour	Shelf Life	Disease Resistance
<b>GÖZDE</b>	250 - 300 gr	Oblate	Red	LSL	HR: Fol; 0,1, Va, Vd, ToMV IR: Tylcv, Tswv



# SANDO 128

- Roma type determinate processing and fresh tomato.
- The plant structure is strong.
- Fruits are red and firm.
- High yield variety.
- Long shelf life.

Variety Name	Fruit Weight	Fruit Shape	Fruit Colour	Shelf Life	Disease Resistance
SANDO 128	160 - 180 gr	Ovate	Red	LSL	HR:Fol; 0,1,2, Va, Vd, ToMV IR: Tswv, Tylcv, N (ma, mi, mj), For

# SANDO 8151

- Roma type determinate processing tomato.
- The plant structure is strong.
- Suitable for machine harvesting.
- Fruits are red and firm.
- High yield variety.
- Long shelf life.



Variety Name	Fruit Weight	Fruit Shape	Fruit Colour	Shelf Life	Disease Resistance
SANDO 8151	100 - 120 gr	Ovate	Red	LSL	HR: Fol; 0,1, Va, Vd, ToMV IR: Tswv, N (Ma, Mi, Mj), For, ToBRFV

# Pepper



MANIER

manier

manier





# NEFER

- Sweet kapia type.
- High yield variety with early maturity and short internodes.
- Suitable for export.
- It has high brix and it is good for grilled, canned food, processing market
- It has a long shelf life.
- Fruits are big, both side red with thick fruit flesh
- Suitable for open field, greenhouse and tunnel cultivation.

Variety Name	Fruit Length	Fruit Colour	Pungency	Shelf Life	Disease Resistance
NEFER	18 - 20 cm	Green - Red	Sweet	LSL	HR: Tm 0

# NEFES

- Sweet Kapia type.
- High yield variety and short internod.
- Plant has good coverage against sunburn.
- Fruits are 2 lobes and 18-20 cm.
- It has high brix and it is good for grilled, canned food, processing market
- Suitable for grilled, processing pepper and fresh market.
- Good for export and domestic market.



Variety Name	Fruit Length	Fruit Colour	Pungency	Shelf Life	Disease Resistance
NEFES	19 - 20 cm	Green - Red	Sweet	LSL	HR: Tm 0-2 IR: Tswv



# KAPTO

- Sweet kapia type.
- High yield variety and short internod.
- Plant has good coverage against sunburn.
- Fruits are 2 lobes and 18-20 cm.
- Suitable for grilled, processing pepper and fresh market.
- Good for export and domestic market.

Variety Name	Fruit Length	Fruit Colour	Pungency	Shelf Life	Disease Resistance
KAPTO	18 - 20 cm	Green - Red	Sweet	LSL	HR: Tm 0-2 IR: Tswv

# MRP 8006

- Sweet Kapia type.
- High yield variety and short internod.
- Plant has good coverage against sunburn.
- Fruits are 2 lobes and 18-20 cm.
- It has high brix and it is good for grilled, canned food, processing market
- Suitable for grilled, processing pepper and fresh market.
- Good for export and domestic market.



Variety Name	Fruit Length	Fruit Colour	Pungency	Shelf Life	Disease Resistance
MRP 8006	18 - 20 cm	Green - Red	Sweet	LSL	HR: Tm 0-2 IR: Tswv





# KOPERTA

- Sweet kapia type.
- Fruits are big size, 2 lobes and green to red.
- Plant has good coverage against sunburn. It has short internod.
- Suitable for pepper paste, grilled pepper and fresh use.
- High yield variety and good for export.

Variety Name	Fruit Length	Fruit Colour	Pungency	Shelf Life	Disease Resistance
KOPERTA	18 - 20 cm	Green - Red	Sweet	LSL	HR: Tm 0 IR: N (Ma, Mi, Mj)

# MRP 8009

- Sweet kapia type.
- Suitable for greenhouse cultivation.
- Long and strong plant habitus.
- High yield variety and mid - early.
- Fruits are green to red with the length of 20-21 cm.
- Good for export and domestic market.



Variety Name	Fruit Length	Fruit Colour	Pungency	Shelf Life	Disease Resistance
MRP 8009	20 - 21 cm	Green - Red	Sweet	LSL	HR: Tm 0-2 IR: Tswv



# NİLÜFER

- Sweet thin sivri pepper type.
- Fruits are glossy dark green.
- Fruit length is 23-25 cm.
- Suitable for greenhouse and open field.

Variety Name	Fruit Length	Fruit Colour	Pungency	Shelf Life	Disease Resistance
NİLÜFER	23 - 25 cm	Glossy Dark Green	Sweet	LSL	HR: Tm 0-2 IR: Tswv, N (Ma, Mi, Mj)

# DERCAN

- Hot sivri pepper type.
- Short internode and strong plant structure.
- The variety is early and has a high yield potential.
- Fruits are dark green, fleshy and 21-22 cm.
- It has long shelf life.



Variety Name	Fruit Length	Fruit Colour	Pungency	Shelf Life	Disease Resistance
DERCAN	21 - 22 cm	Green	Hot	LSL	HR: Tm 0





# DERMAN

- Sweet sivri pepper type.
- Tolerance to cold and hot conditions.
- High yield variety with early maturity.
- Fruits are bright dark green, crispy and 22-24 cm.
- Suitable for greenhouses and open field.

Variety Name	Fruit Length	Fruit Colour	Pungency	Shelf Life	Disease Resistance
DERMAN	22 - 24 cm	Green	Sweet	Medium	HR: Tm 0-2 IR: Tswv

# HAKİM

- Sweet kil pepper type.
- Tolerance to cold and hot conditions.
- High yield variety with early maturity.
- Fruits are bright mid - green, crispy and 23-25 cm.
- Suitable for greenhouses and open field.



Variety Name	Fruit Length	Fruit Colour	Pungency	Shelf Life	Disease Resistance
HAKİM	23 - 25 cm	Bright-mid Green	Sweet	LSL	HR: Tm 0-2 IR: Tswv



# SİMAY

- Charleston type.
- Strong plant structure and short internode.
- Fruits are bright green, crispy.
- High yield variety, early maturity.
- It has long shelf life, tolerance to cold and hot conditions.

Variety Name	Fruit Length	Fruit Colour	Pungency	Shelf Life	Disease Resistance
SİMAY	22 - 24 cm	Light Green	Sweet	LSL	HR: Tm 0-2 IR: Tswv

# SELİN

- Charleston type.
- Strong plant structure and short internode.
- Fruits are bright green, crispy.
- High yield variety, early maturity.
- It has long shelf life, tolerance to cold and hot conditions.



Variety Name	Fruit Length	Fruit Colour	Pungency	Shelf Life	Disease Resistance
SELİN	22 - 24 cm	Light Green	Sweet	LSL	HR: Tm 0-2 IR: Tswv



# MRP 9011

- Hot charleston type.
- Fruits are 19-20 cm.
- High yield variety and high quality fruit.
- Tolerance to cold and hot conditions.
- Good for export and domestic market.
- Suitable for openfield and greenhouse.

Variety Name	Fruit Length	Fruit Colour	Pungency	Shelf Life	Disease Resistance
MRP 9011	19 - 20 cm	Whitish Green	Hot	LSL	HR: Tm 0-2 IR: N (Ma, Mi, Mj)

# GENT

- Hot charleston type.
- Fruits are 19-20 cm.
- High yield variety and high quality fruit.
- Tolerance to cold and hot conditions.
- Good for export and domestic market.
- Suitable for openfield and greenhouse.



Variety Name	Fruit Length	Fruit Colour	Pungency	Shelf Life	Disease Resistance
GENT	19 - 20 cm	Whitish Green	Hot	LSL	HR: Tm 0-2 IR: N (Ma, Mi, Mj)



# TENIS

- Dolma type pepper.
- Suitable for greenhouse and open field cultivation.
- Strong and productive plant structure and short internodes.
- Fruits are thin flesh and green.

Variety Name	Fruit Length	Fruit Colour	Pungency	Shelf Life	Disease Resistance
TENIS	6-8 cm	Green-Red	Sweet	LSL	HR: Tm 0-2 IR: N (Ma, Mi, Mj)

# SEHER

- Blocky type.
- Compact plant structure.
- High yield variety with early maturity.
- Fruits are 4 lobes and 10-11 cm.
- Good for export and domestic market.



Variety Name	Fruit Length	Fruit Colour	Pungency	Shelf Life	Disease Resistance
SEHER	10 - 11 cm	Green - Yellow	Sweet	LSL	HR: Tm 0-3: L4 IR: Tswv, N (Ma, Mi, Mj)





# CALINUS

- Bell pepper blocky type.
- Fruits are 4 lobes and 10-11 cm.
- Compact plant structure.
- High yield variety with mid-early maturity.
- Good for export and domestic market.

Variety Name	Fruit Length	Fruit Colour	Pungency	Shelf Life	Disease Resistance
CALINUS	10 - 11 cm	Green-Red	Sweet	LSL	HR: Tm 0-3: L4 IR: Tswv, N (Ma, Mi, Mj)

# CRISBY

- Sweet köy pepper variety.
- Suitable for greenhouse and open field production.
- Fruits are thin flesh and green.
- High quality and crunchy fruit.



Variety Name	Fruit Length	Fruit Colour	Pungency	Shelf Life	Disease Resistance
CRISBY	14-16 cm	Green-Red	Sweet	LSL	HR: Tm 0-2 IR: N (Ma, Mi, Mj)



# SEYİR 63

- Hot köy pepper variety.
- Suitable for greenhouse and open field production.
- Fruits are green.
- Fruits are tasty high quality for fresh usage.

Variety Name	Fruit Length	Fruit Colour	Pungency	Shelf Life	Disease Resistance
SEYİR 63	14-16 cm	Green-Red	Hot	LSL	HR: Tm 0-2 IR: N (Ma, Mi, Mj)

# SONARO

- It is a Jalapeno type pepper.
- It has a vigorous and fruit-covering plant.
- Fruit setting and yield is good at high temperature.
- Fruit is glossy dark green.
- Suitable for pickling.



Variety Name	Fruit Length	Fruit Colour	Pungency	Shelf Life	Disease Resistance
SONARO	8 - 10 cm	Green - Red	Hot	LSL	HR: Tm 0



# PUMA

- Maraş type hot pepper.
- It is an early and productive variety.
- Pungency level is over 20.000 scoville.
- Fruit flesh is thin.
- Fruits are suitable for fresh market, drying and making spices.

Variety Name	Fruit Length	Fruit Colour	Pungency	Shelf Life	Disease Resistance
PUMA	8 - 10 cm	Green - Red	Hot	LSL	HR: Tm 0

# HİSAR

- Chili type pepper.
- Suitable for indoor and outdoor cultivation.
- The fruit setting is good in cold weather conditions.
- Has a compact plant structure with a high formation of side branches.
- Suitable for green and red harvest.
- Fruits are highly resistant to cracking.



Variety Name	Fruit Length	Fruit Colour	Pungency	Shelf Life	Disease Resistance
HİSAR	18 - 20 cm	Dark Green	Hot	LSL	HR: Tm 0 IR: Tswv, N

# Eggplant



MANİE





# SIMYA

- Suitable for under cover and open field cultivation.
- The plant structure is strong and closed.
- It is an early and productive variety.
- Long cylindrical fruits are shiny dark black.
- Fruit has long shelf life.

Variety Name	Fruit Size	Fruit Shape	Fruit Colour	Shelf Life	Disease Resistance
SIMYA	22 – 26 cm	Cylindric	Shiny Black	LSL	HR: Fom

# MRE 2093

- Cylindric eggplant variety.
- The plant structure is strong and sturdy.
- It is early variety and has short internodes.
- Fruit type is high quality and firm.
- Its long cylindrical fruits are black.
- It has a long shelf life.
- It is suitable for open field and greenhouse cultivation.



Variety Name	Fruit Size	Fruit Shape	Fruit Colour	Shelf Life	Disease Resistance
MRE 2093	24 - 26 cm	Cylindric	Shiny Black	LSL	HR: Fom



# MRE 1031

- Long and oval eggplant variety.
- Suitable for greenhouse and open field cultivation.
- It has high fruit setting ability.
- Fruit color is dark black and shiny.

Variety Name	Fruit Size	Fruit Shape	Fruit Colour	Shelf Life	Disease Resistance
MRE 1031	18 - 20 cm	Round Oval	Shiny Black	LSL	HR: Fom

# MRE 1108

- Oval eggplant variety with purple and white stripes.
- Fruits are thornless, hard and have white flesh.
- It is suitable for greenhouse and open field cultivation.
- It has high fruit setting ability.



Variety Name	Fruit Size	Fruit Shape	Fruit Colour	Shelf Life	Disease Resistance
MRE 1108	16 - 18 cm	Cylindric	White Stripes on Purple Background	LSL	HR: Fom



# MRE 2008

- Suitable for greenhouse and open field cultivation.
- High adaptability.
- Strong plant structure.
- High yield.
- Black fruit color.
- Long-cylindrical fruit type.
- Long shelf life.

Variety Name	Fruit Size	Fruit Shape	Fruit Colour	Shelf Life	Disease Resistance
MRE 2008	32 – 35 cm	Cylindric	Shiny Black	LSL	HR: Fom

# MRE 1009

- It has an early, medium-vigorous and generative plant structure.
- It is a uniform fruit.
- Fruits are round and purple in color.
- The calyx is less spiny.



Variety Name	Fruit Size	Fruit Shape	Fruit Colour	Shelf Life	Disease Resistance
MRE 1009	8-10 cm	Round	Shiny Black	LSL	HR: Fom

# Cucumber



MANIER

manier

manier





# MRC 07

- It is suitable for autumn and spring season indoor production.
- High yield variety. Early maturing fruits.
- It has short internode and multi fruits per node.
- It has short side branches. Fruits don't lose their shape in case of late harvest.

Variety Name	Fruits Per Node	Fruit Length	Fruit Colour	Shelf Life	Disease Resistance
MRC 07	Multi	18 - 20 cm	Glassy Green	LSL	HR: PM IR:CMV,CVYV,ZYMV,WMV,PRSV

# MRC 05

- It is suitable for autumn and spring production season.
- Short internode and semi-multi type.
- Plant have small leaves and its tolerance to diseases.
- Fruit is bright, smooth with dark green colour.
- Early and high yield variety.
- Fruits don't lose their shape in case of late harvest.



Variety Name	Fruits Per Node	Fruit Length	Fruit Colour	Shelf Life	Disease Resistance
MRC 05	Semi-Multi	16 - 18 cm	Dark Green	LSL	HR: PM IR:CMV,CVYV,ZYMV,WMV,PRSV



# KUATRO

- It is suitable for autumn and spring season indoor production.
- Variety is extremely productive.
- Fruits grow quickly.
- It has short internode and multi fruits per node.
- It has short side branches.
- Fruits don't lose their shape in case of late harvest.

Variety Name	Fruits Per Node	Fruit Length	Fruit Colour	Shelf Life	Disease Resistance
KUATRO	Multi	18 - 20 cm	Glassy Green	LSL	IR:CMV,CVYV,ZYMV,WMV,PRSV,PM

# COPERNIC

- It is suitable for autumn and spring production season.
- Short internode and semi-multi type.
- Plant have small leaves and its tolerance to diseases.
- Fruit is bright, smooth with dark green colour.
- Early and high yield variety.
- Fruits don't lose their shape in case of late harvest.



Variety Name	Fruits Per Node	Fruit Length	Fruit Colour	Shelf Life	Disease Resistance
COPERNIC	Semi-Multi	16 - 18 cm	Dark Green	LSL	HR: PM IR:CMV,CVYV,ZYMV,WMV,PRSV





# SERİ

- Suitable for autumn, spring and winter seasons production.
- It has medium short internode, single fruit and long side branch.
- Tolerant to diseases and healthy plant structure.
- Fruits are bright green and smooth.
- High yield variety with mid-early maturity.

Variety Name	Fruits Per Node	Fruit Length	Fruit Colour	Shelf Life	Disease Resistance
SERİ	Single	16 - 18 cm	Glassy Green	LSL	IR: CMV, PM

# AGNES

- Suitable for autumn, spring and winter seasons production.
- It has medium short internode single fruit and long side branch.
- Tolerant to diseases and healthy plant structure.
- Fruits are bright green and smooth.
- High yield and mid-early variety.



Variety Name	Fruits Per Node	Fruit Length	Fruit Colour	Shelf Life	Disease Resistance
AGNES	Single	20 - 22 cm	Glassy Green	LSL	IR: CMV, PM



# BESTA

- Single fruit, suitable for autumn and spring seasons production.
- Variety has short internode and very early.
- Short side branch and it gives again fruits on lateral branches.
- Well performing in cold conditions and tolerant to diseases.

Variety Name	Fruits Per Node	Fruit Length	Fruit Colour	Shelf Life	Disease Resistance
BESTA	Single	16 - 18 cm	Glassy Green	LSL	IR: CMV, PM

# CAMLICA

- It has a dark green, strong plant structure.
- It is a variety with high yield potential.
- Long harvest period.
- It has high cold tolerance.
- Fruits are bright, dark green fruit with a long shelf life.



Variety Name	Fruits Per Node	Fruit Length	Fruit Colour	Shelf Life	Disease Resistance
CAMLICA	Single	21 - 24 cm	Dark Green	LSL	IR:CMV,PM





# DOLUNAY

- Beith Alpha type, open-field cucumber variety.
- Suitable for open field cultivation in spring, summer and early autumn.
- It has a strong plant structure and high yield potential.
- It has a long shelf life.
- It has slightly corrugated, 16-18 cm long and bright green fruit.

Variety Name	Fruits Per Node	Fruit Length	Fruit Colour	Shelf Life	Disease Resistance
DOLUNAY	Single	16 - 18 cm	Glassy Green	LSL	IR: CMV, PM

# KERVAN

- It's lange type cucumber variety.
- Suitable for autumn, spring and winter seasons production.
- Mid-early variety is very productive
- Fruits are 30-33 cm and bright dark green.
- High yield variety.



Variety Name	Fruits Per Node	Fruit Length	Fruit Colour	Shelf Life	Disease Resistance
KERVAN	Single	30 - 33 cm	Dark Green	LSL	IR: CMV, PM



# ATOM

- Mini multi type and suitable for autumn, spring and summer production.
- Short side branches and strong habitus.
- Fruits are bright green and smooth.
- Excellent long shelf life and a tasty fruit.
- Early maturity, high yield parthenocarpic variety.

Variety Name	Fruits Per Node	Fruit Length	Fruit Colour	Shelf Life	Disease Resistance
ATOM	Multi	10 - 12 cm	Glassy Green	LSL	IR: CMV, CVYV,ZYMV PM

# MRC 9003

- It is an autumn variety suitable for greenhouse cultivation.
- Fruits are shows ideal development and high yield potential in cold conditions.
- Fruits have strong apex and dark green leaves.
- It has dark, bright green and slightly corrugated fruits.



Variety Name	Fruits Per Node	Fruit Length	Fruit Colour	Shelf Life	Disease Resistance
MRC 9003	Multi	5 - 6 cm	Green	LSL	IR:CMV,CVYV,WMV,PRSV





# YILKI

- Mini multi type cucumber variety suitable for autumn, spring and summer seasons under cover production.
- Fruits are bright green and smooth.
- High yield variety and fruits have long shelf life.

Variety Name	Fruits Per Node	Fruit Length	Fruit Colour	Shelf Life	Disease Resistance
YILKI	Multi	8 - 10 cm	Glassy Green	LSL	IR: CMV, CVYV,ZYMV PM

# MRC 6052

- Mini multi variety for fall, spring and summer.
- It has short side branches and a very strong plant structure.
- Fruit bearing speed is very high.
- Fruits are shiny and green.
- High yield and high fruit quality.
- Long shelf life variety.



Variety Name	Fruits Per Node	Fruit Length	Fruit Colour	Shelf Life	Disease Resistance
MRC 6052	Multi	10-12 cm	Glassy Green	LSL	IR:CMV,CVYV,ZYMV,WMV,PRSV



# ALPAGU

- It's a slicer type cucumber.
- Suitable for autumn and spring season production.
- Great adaptation to different growing conditions.
- Fruits are strong and dark green.
- High yield and high fruit quality.
- Long shelf life variety.

Variety Name	Fruits Per Node	Fruit Length	Fruit Colour	Shelf Life	Disease Resistance
ALPAGU	Single	15 - 17 cm	Dark Green	LSL	IR: CMV,CVYV,PM

# KARGU

- It's a slicer type cucumber.
- Suitable for autumn and spring season production.
- Great adaptation to different growing conditions.
- Fruits are strong and dark green.
- High yield and high fruit quality.
- Long shelf life variety.



Variety Name	Fruits Per Node	Fruit Length	Fruit Colour	Shelf Life	Disease Resistance
KARGU	1_2	12 - 14 cm	Dark Green	LSL	IR: CMV, PM





# MRC 1032

- Slicer type cucumber variety
- Suitable for greenhouse, autumn and spring cultivation
- Productive with high fruit quality
- Dark green fruit color
- Long shelf life

Variety Name	Fruits Per Node	Fruit Length	Fruit Colour	Shelf Life	Disease Resistance
MRC 1032	1 - 2	12 - 14 cm	Dark Green	LSL	IR:CMV,CVYV,ZYMV,WMV,PRSV

# TULGA

- It's a parthenocarpic, pickling variety.
- Suitable for tunnel and open field during spring and autumn.
- It has short internodes and strong habitus.
- High yield variety.
- It has a long shelf life and does not cause fruit internal discharge.
- Long harvest period.



Variety Name	Fruits Per Node	Fruit Length	Fruit Colour	Shelf Life	Disease Resistance
TULGA	Semi Multi	9 - 11 cm	Green	LSL	IR: CMV, PM



# MRC 1082

- Parthenocarpic spined type cucumber variety.
- Strong, green plant structure.
- 100% female flowers and long harvest period.
- Cylindrical, spiny, green uniform fruits.
- Fruit length and diameter ratio: 3.1 : 1.
- Fruit caliber is mainly number 1 and 2.
- It has a long shelf life and does not cause fruit internal discharge.
- High fruit setting and yield.

Variety Name	Fruits Per Node	Fruit Length	Fruit Colour	Shelf Life	Disease Resistance
MRC 1082	Semi Multi	8 - 10 cm	Green	LSL	IR: CMV, PM

# MRC 1023

- Parthenocarpic spined type cucumber variety.
- Strong, green plant structure.
- 100% female flowers and long harvest period.
- Cylindrical, spiny, green uniform fruits.
- Fruit length and diameter ratio: 3.1 : 1.
- Fruit caliber is mainly number 1 and 2.
- It has a long shelf life and does not cause fruit internal discharge.
- High fruit setting and yield.



Variety Name	Fruits Per Node	Fruit Length	Fruit Colour	Shelf Life	Disease Resistance
MRC 1023	Semi Multi	8 - 10 cm	Green	LSL	IR: CMV, PM

# Squash

MANIER



## SEYDEN

- Suitable for greenhouse, tunnel and open field spring and autumn production.
- Extremely high yield.
- Fruits are cylindric and bright green.
- Fruits have tolerance to deformation during harvest and transport.
- Good fruit setting in under-cover production.
- Good for export and has long shelf life.

Variety Name	Fruit Size	Fruit Shape	Fruit Colour	Shelf Life	Disease Resistance
SEYDEN	20 x 7 cm	Cylindric	Glassy Green	LSL	IR: CMV,PM, DM

## TORPİDO

- Suitable for indoor and open field squash growing production.
- Strong plant structure and high yield.
- Fruits are cylindric and bright green.
- Extremely high yield in autumn and high plateau productions.



Variety Name	Fruit Size	Fruit Shape	Fruit Colour	Shelf Life	Disease Resistance
TORPİDO	20 x 8 cm	Cylindric	Glassy Green	LSL	IR: CMV, PM, DM





# TARGET

- Suitable for greenhouse, tunnel and open field early spring production.
- Extremely high yield.
- Fruits are cylindric and bright green.
- Fruits have tolerance to deformation during harvest and transport.
- Fruits have upright plant structure.

Variety Name	Fruit Size	Fruit Shape	Fruit Colour	Shelf Life	Disease Resistance
TARGET	20 x 6 cm	Cylindric	Glassy Green	LSL	IR: CMV, PM, DM

# İNCİ

- Suitable for indoor and open field squash growing production.
- Strong plant structure and high yield.
- Fruits are cylindric and dark green.
- Extremely high yield in autumn and high plateau productions.



Variety Name	Fruit Size	Fruit Shape	Fruit Colour	Shelf Life	Disease Resistance
İNCİ	20 x 7 cm	Cylindric	Dark Green	LSL	IR: CMV, PM, DM



# KUNURİ

- Dark green zucchini with high yield potential.
- Suitable for indoor, open field and all-year-round planting.
- Fruits are cylindric and have long shelf life.
- Fruits have a tolerance to deformation during harvest and transport.
- Compact plant structure with uniform fruits.

Variety Name	Fruit Size	Fruit Shape	Fruit Colour	Shelf Life	Disease Resistance
KUNURİ	25 x 6 cm	Cylindric	Dark Green	LSL	IR: PM, DM

# MRS 1005

- Lebanese type squash variety suitable for open field spring and autumn cultivation
- Short internode and with high yield
- Fruits are bright green, 10-12 cm long
- Long shelf life
- Resistant to scratches during harvest



Variety Name	Fruit Size	Fruit Shape	Fruit Colour	Shelf Life	Disease Resistance
MRS 1005	12 X 7 CM	Lebanese	Bright Green	LSL	IR: PM, DM



# AYDA

- Suitable for indoor and open field squash growing production.
- Strong plant structure and high yield.
- Fruits are round and bright green.
- Extremely high yield in autumn, spring and high plateau productions.

Variety Name	Fruit Size	Fruit Shape	Fruit Colour	Shelf Life	Disease Resistance
AYDA	8 X 6 CM	Round	Glassy Green	LSL	IR: CMV, PM, DM

# MRS 8029

- Suitable for indoor and open field squash growing production.
- Strong plant structure and high yield.
- Fruits are round and bright dark green.
- Extremely high yield in autumn, spring and high plateau productions.



Variety Name	Fruit Size	Fruit Shape	Fruit Colour	Shelf Life	Disease Resistance
MRS 8029	8 X 6 CM	Round	Glassy Dark Green	LSL	IR: CMV, PM, DM

# Melon



MANIER





# KAFKA

- Kırkağaç type melon.
- Suitable for indoor, outdoor and single-season cultivation.
- High yield and early variety.
- Plant structure is strong and has high resistance to diseases.
- Fruits are tasty and the average fruit weight is 3-4 Kg.
- Flesh color is orange cream.

Variety Name	Fruit Weight	Flesh Colour	Fruit Colour	Shelf Life	Disease Resistance
KAFKA	3 - 4 kg	Orange Cream	Yellow	Medium	IR: PM, DM

# ŞIRA

- It's a galia type melon.
- Suitable for tunnel and open field production.
- It's an early variety.
- Variety has high tolerance to fungal diseases and high yield.
- Fruit outer colour is yellow and netted.
- Flesh colour is whitish green.



Variety Name	Fruit Weight	Flesh Colour	Fruit Colour	Shelf Life	Disease Resistance
ŞIRA	2 - 2,5 kg	Whitish Green	Yellow	Medium	IR: PM, DM



# SÜREN

- It's a galia type melon.
- Suitable for tunnel and open field production. It's mid-early variety.
- Variety has high tolerance to fungal diseases and high yield.
- Fruit outer colour is yellow and netted.
- Flesh colour is whitish green.

Variety Name	Fruit Weight	Flesh Colour	Fruit Colour	Shelf Life	Disease Resistance
SÜREN	3 - 3,5 kg	Whitish Green	Yellow	LSL	IR: PM, DM

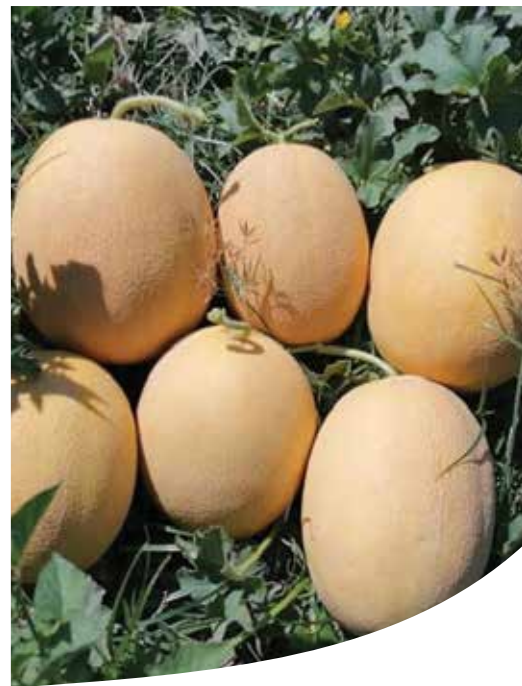
# STANZA

- Galia type melon.
- Suitable for greenhouse and open field production.
- Fruite shape is round and netted.
- High quality uniform fruit.
- Fruits are avg 1,5-2 kg.



Variety Name	Fruit Weight	Flesh Colour	Fruit Colour	Shelf Life	Disease Resistance
STANZA	1,5 - 2 kg	Whitish Green	Yellow	LSL	IR: PM, DM





# SERİN

- Oval, netted ananas type variety.
- Suitable for tunnel and open field production.
- High sugar rate and good flavor.
- Fruits are avg 2-2,5 kg.

Variety Name	Fruit Weight	Flesh Colour	Fruit Colour	Shelf Life	Disease Resistance
SERİN	2 - 2,5 kg	Orange Cream	Yellow	Medium	IR: PM, DM

# GİZEM

- Ananas type melon.
- Has high resistance to disease and high yield variety.
- Suitable for tunnel and open field production.
- Fruit and flesh color is cream orange and netted.
- Fruit is tasty and avg weight is 2-3 kg.



Variety Name	Fruit Weight	Flesh Colour	Fruit Colour	Shelf Life	Disease Resistance
GİZEM	2 - 3 kg	Orange Cream	Yellow	Medium	IR: PM, DM



# MRM 526

- It's a Canary type melon.
- Suitable for tunnel and open field production.
- Variety has Intermediate tolerance to Gemini virus
- Fruit outer is yellow with white stripe and no netted.
- Flesh colour is white.

Variety Name	Fruit Weight	Flesh Colour	Fruit Colour	Shelf Life	Disease Resistance
MRM 526	0,8 - 1,5 kg	White	Yellow	Medium	IR: Gemini Virus

# MRM 601

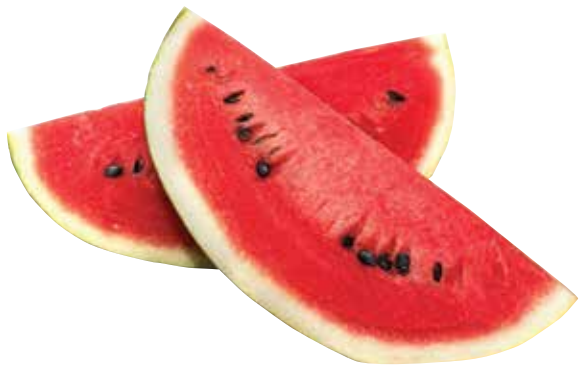
- It's a cantalope type melon
- Suitable for tunnel production
- Variety has Intermediate tolerance to fungal disease
- Fruit outer is green and netted
- Flesh colour is orange.



Variety Name	Fruit Weight	Flesh Colour	Fruit Colour	Shelf Life	Disease Resistance
MRM 601	1 - 1,5 kg	Orange	Green	Medium	IR: PM, DM



# Watermelon



MANIER



## ESTAR 1056

- Very early and mid-leaf coverage.It has high sugar content in production with rootstock as well.
- Good performance at low tunnel early spring production and good fruit setting in cold conditions.
- Fruit flesh colour is red and seeds are small.

Variety Name	Fruit Weight	Flesh Colour	Fruit Colour	Shelf Life	Disease Resistance
ESTAR 1056	5 - 8 kg	Red	Dark Green	Medium	IR: Fon 2

## ATAKAN

- It has high sugar content.
- Fruit shape is oval and 8-12 kg. Mid-early variety with high yield potential.
- The variety has a very vigor habitus therefore, the fruits are protected from sun burn.



Variety Name	Fruit Weight	Flesh Colour	Fruit Colour	Shelf Life	Disease Resistance
ATAKAN	8 - 12 kg	Red	Dark Green	Medium	IR: Fon 1



# ORKA

- It has high sugar content.
- Fruit shape is oval and avg weight is 8-12 kg. Mid-early maturity.
- The variety has a very vigor habitus therefore, the fruits are protected from sun burn.

Variety Name	Fruit Weight	Flesh Colour	Fruit Colour	Shelf Life	Disease Resistance
ORKA	8 - 12 kg	Red	Dark Green	Medium	IR: Fon 1

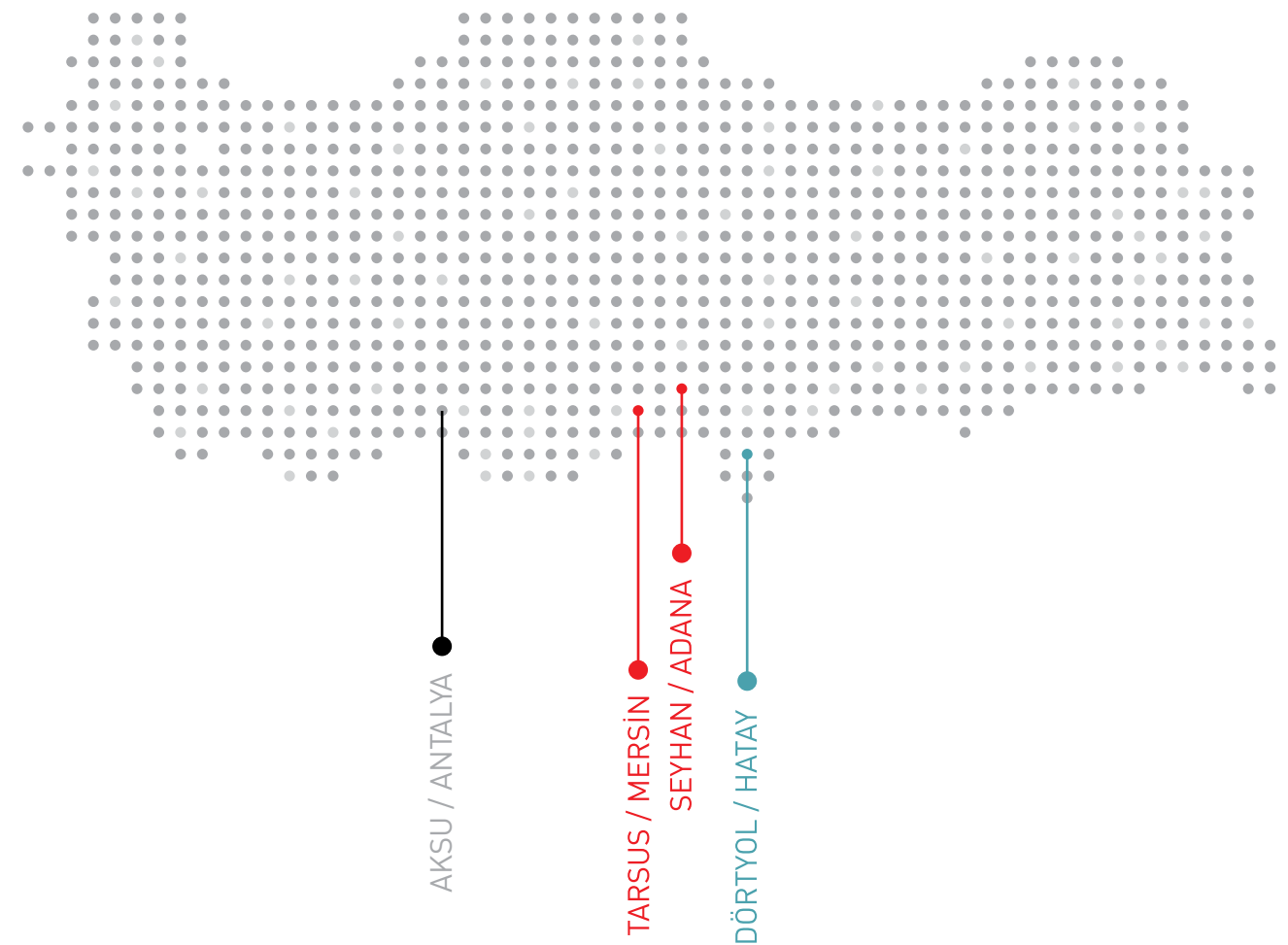
# MRW 1034

- It is a black watermelon variety suitable for greenhouse, low tunnel and open field cultivation.
- The variety has a very vigor habitus therefore, the fruits are protected from sun burn.
- It is mid early and compatibility rootstock.
- The outer shell color is dark.
- The fruit is oval.
- It is red, crisp, high quality and has a long shelf life.



Variety Name	Fruit Weight	Flesh Colour	Fruit Colour	Shelf Life	Disease Resistance
MRW 1034	6 - 8 kg	Red	Dark Green	Medium	IR: Fon 2

- Manier Gölbaşı Yerleşkesi
- Manier Tarsus Yerleşkesi
- Manier Dört Yol Yerleşkesi
- Manier Antalya Yerleşkesi



# MANIER



# MANIER

• Tohum • Seeds • Semillas • Semences • Sementi • farë • cemeHa • 种子 • بذر • بیج • بذور